

Case

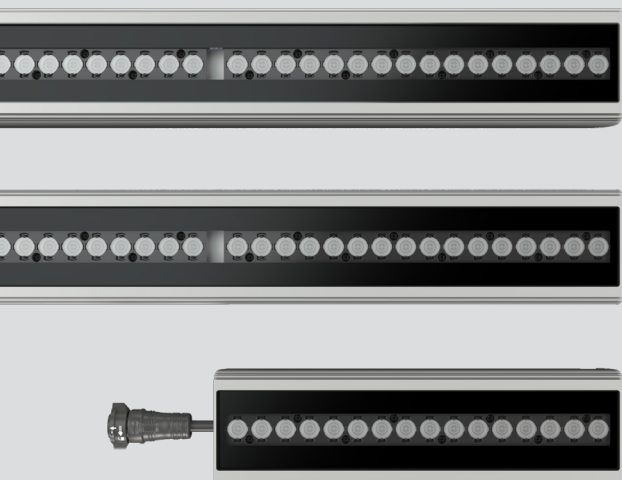
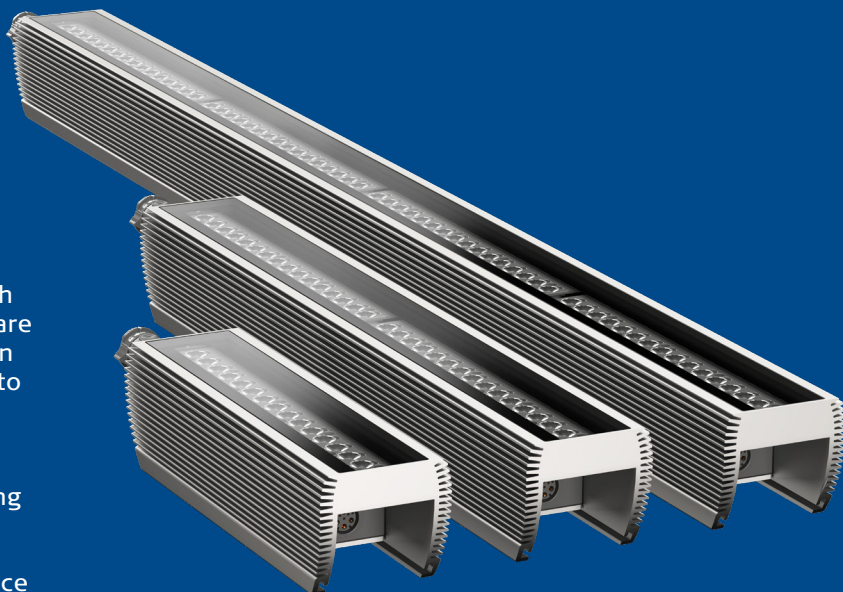
# SGM Light

## TASK

**CUSTOMER PRODUCT:** High-performance RGBW LED light source for professional use where high requirements for output, durability and design are essential. Used within architectural design when building facades or infrastructure are required to feature creative design.

**THE COLLABORATION:** Prototyping and o-series of the i1-Linear RGBW wash light series, including mounting equipment. Cost-optimized solutions for production and delivery of high-quality extruded profiles to ensure high finish on surface treatment. Subsequent serial production with high volume deliveries.

**PRODUCTION:** Manufacture of CNC-machined items from specially-designed extruded profiles. Anodised surface treatment and fitting of self-clinching studs for the attachment of electronic components.



## SOLUTION

- Technical assistance during development and pricing.
- Special designed extruded profiles.
- CNC machining.
- Surface treatment with technical anodizing.
- Assembly.

## Result

- Produced in Denmark.
- Uniform items with uniform surfaces.
- Flexible ordering and delivery setup.

**ab Aluminium** has been a key collaborative partner for **SGM Light** from day 1. To be relevant to our markets, we set high standards for speed, quality, flexibility and other parameters.

Alex Thygesen Hansen –  
Operations Manager, SGM Light A/S